

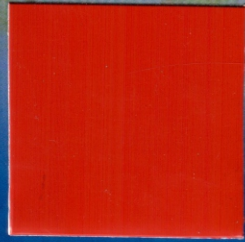


EVERYTHING
YOU NEED
IS HERE

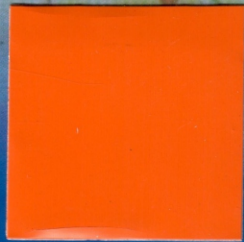


Genesis Powder Coating®

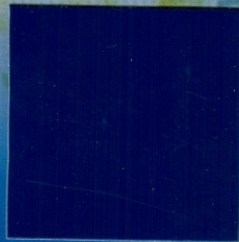




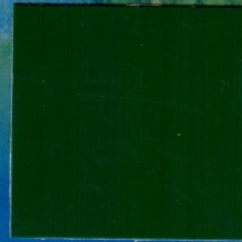
GPC/PP3102 FG
COKE RED



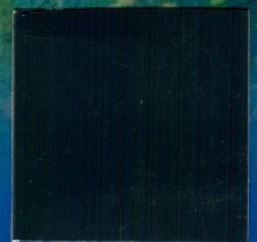
GPC/PP2004FG
RAL 2004



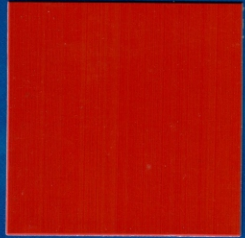
GPC/PA5013FG
RAL 5013



GPC/PA6005FG
RAL 6005



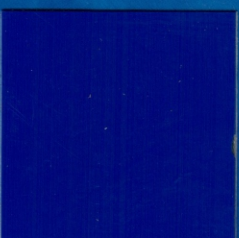
GPC/PP7021SG
RAL 7021



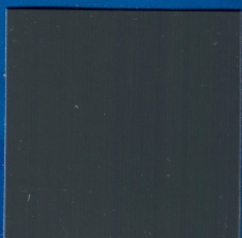
GPC/PA3000FG
RAL 3000



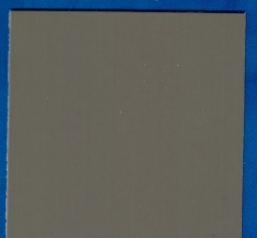
GPC/PP1023HG
RAL 1023



GPC/PA5002FG
RAL 5002



GPC/PA7024FG
RAL 7024



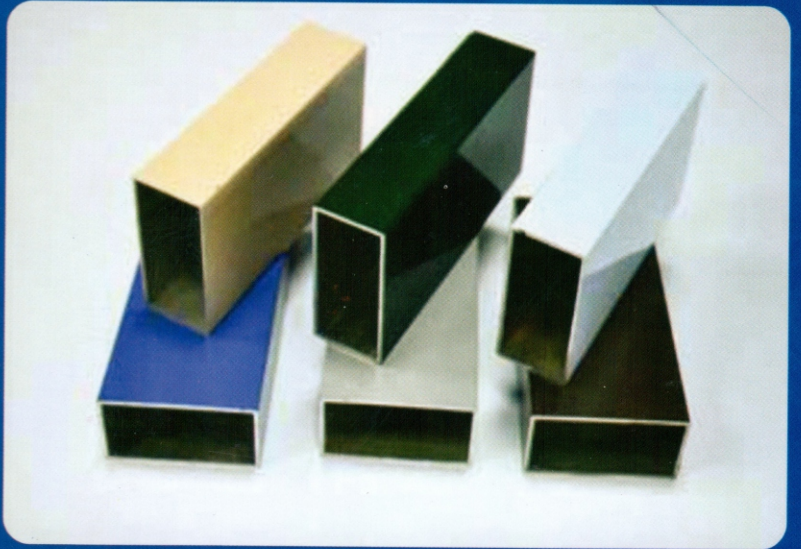
GPC/PA7039FG
RAL 7039



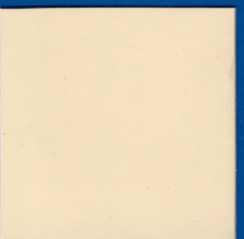
GPC/PA3104FG
PINK



GPC/PA1003FG
RAL 1003



GPC/PA9016FG
RAL 9016



GPC/PA1015FG
RAL 1015



GPC/PA9003FG
RAL 9003



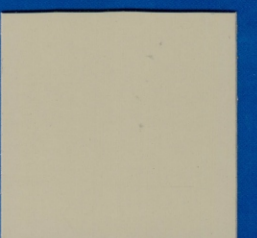
GPC/PA9010FG
RAL 9010



GPC/PA5017FG
RAL 5017



GPC/PA7012FG
RAL 7012



GPC/PA7032FG
RAL 7032



GPC/PA9002FG
RAL 9002



GPC/PP9005FG
RAL 9005



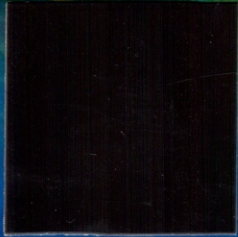
GPC/PA5012FG
RAL 5012



GPC/PA7001FG
RAL 7001



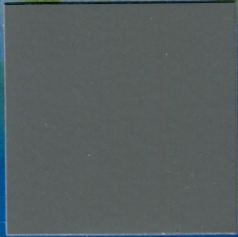
GPC/PA7035FG
RAL 7035



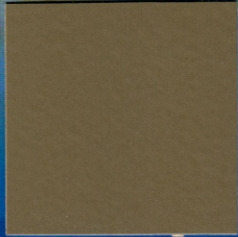
GPC/PA8019FG
RAL 8019



GPC/PA9005 SILKMATT
RAL9005



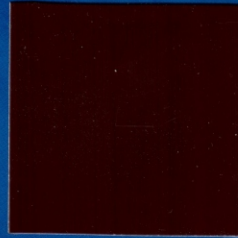
GPC/PA7800 SILK MATT
ANODIZED GREY



GPC/PA 8800 SILK MATT
ANODIZED CHAMPAGNE



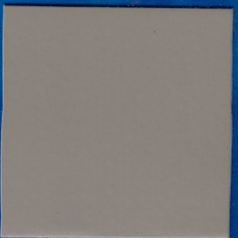
GPC/PP1566X
CHAMPAGNE



GPC/PA8017FG
RAL 8017



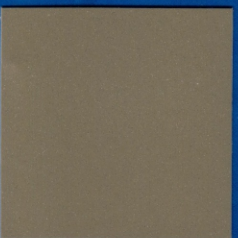
GPC/PA7184DM
ANODIZED BLUE



GPC/PA7801 SILK MATT
CONCREAT GREY



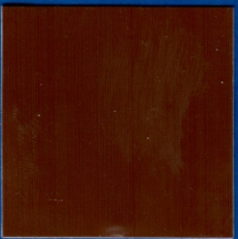
GPC/PA9016 SILK MATT
RAL 9016



GPC/PP1035X
RAL1035



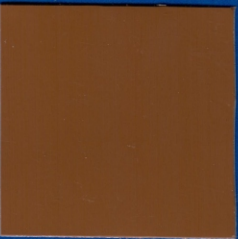
GPC/PA8016FG
RAL 8016



GPC/PA 8120FG
BROWN



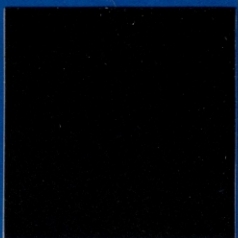
GPC/PA8001FG
RAL8001



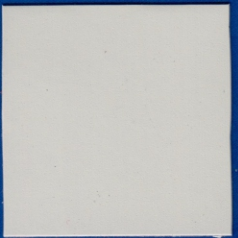
GPC/PA8024FG
RAL8024



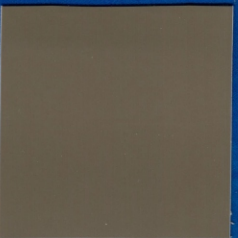
GPC/PA9005MB
RAL 9005



GPC/PP9005SM
RAL 9005



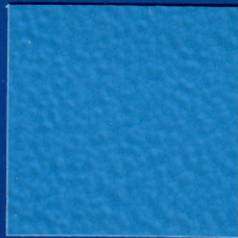
GPC/PA7047SM
RAL 7047



GPC/PP7120SM
CHAMPAGNE



GPC/PA9016SM
RAL 9016



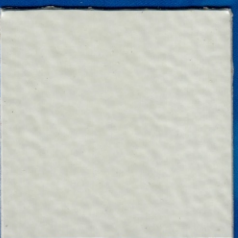
GPC/PP5117CT
VESPA BLUE



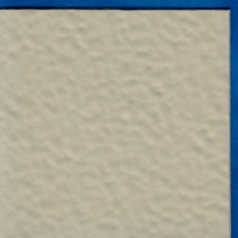
GPC/PP9005CT
RAL 9005



GPC/PP9016CT
RAL 9016



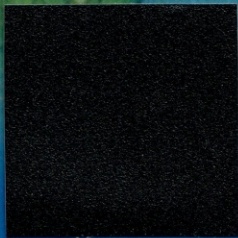
GPC/PP7035CT
RAL 7035



GPC/PP7032 CT
RAL 7032



GPC/PA7131SM-X
DARK GREY



GPC/PA9005ST
EBONY BLACK



GPC/PA7194ST
SAND GREY



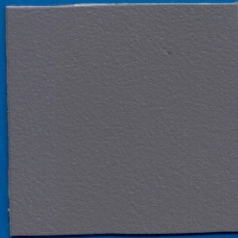
GPC/PA3119ST
BRICK RED



GPC/PP1569X
FANCY COPPER



GPC/PA7189X SLIVER
IRON GREY



GPC/PA7127ST
ATLANTIS GREY



GPC/PA5118ST
DIAMOND BLUE



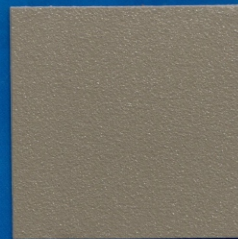
GPC/PA3123ST
SCARLET RED



GPC/PA8108ST
FIRE STONE



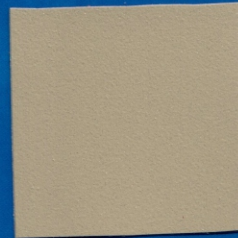
GPC/PP7108X
SILVER



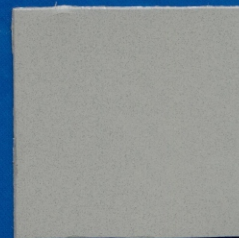
GPC/PA7116ST
AZTEC GREY



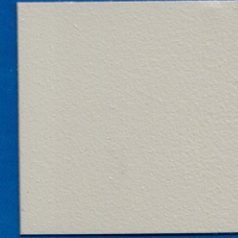
GPC/PP7100BX
SILVER GREY



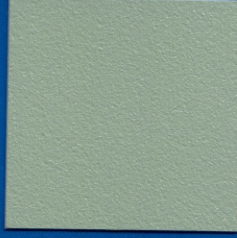
GPC/PA1124ST
CHAMPAGNE



GPC/PP9006X
RAL 9006



GPC/PA7126ST
CONCORD GREY



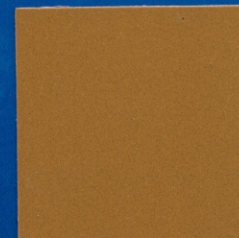
GPC/PA6112ST
CORAL GREEN



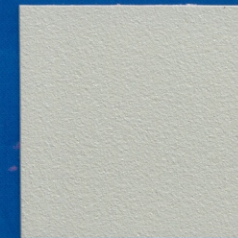
GPC/PA1113ST
BROWN



GPC/PA8125ST
DARK BROWN



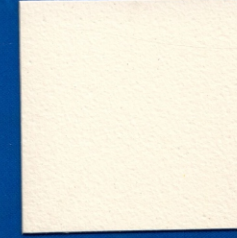
GPC/PP1557-X
PEARL GOLD



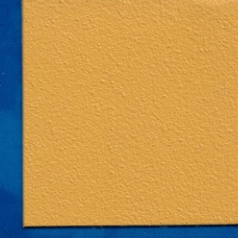
GPC/PA7149ST
TITANIUM SILVER



GPC/PA9016ST
INFINITY WHITE



GPC/PA1148ST
SPINIX BEIGE



GPC/PA1112ST
YELLOW



We Offer a Comprehensive Product Range...

We offer a wide range of high-quality powder coating products for interior and exterior applications for general industry, furniture, appliances, automotive, electrical products, architectural aluminium industry and functional coatings for pipe and rebar coating.



Polyester Architectural *PA Series*

- High UV protection & color stability.
- Exceptional exterior durability & weather resistance.
- Backed with International Certificate. - **Qualicoat Class-1**



Pure Polyester Powders *PP Series*

- Very good exterior durability.
- Excellent over bake resistance.
- Available in variety of colors & finishes.



Epoxy Polyester Powders *MX Series*

- Good chemical & mechanical properties.
- Recommended for indoor application.
- Available in different finishes & colors.



ZincoPrim *Primer Series*

- ZincoPrim provides excellent resistance to corrosion.
- Excellent inter-coat adhesion.
- Very good degassing properties.



Antimicrobial Coating *AM Series*

- Genesis Antimicrobial technology for hygienic system.
- Provides protection against microbial growth.
- Recommended for exterior and interior applications.



Ultra Low Bake Coating *ULB Series*

- Special designed product for MDF coating.
- Significant saving to time & energy.
- Environmental friendly, no solvent emission.



Polyester Super Durable *PS Series*

- Excellent color and gloss retention.
- Guaranteed performance for exterior durability.
- High performance durability for architectural coatings.



Fusion Bonded Epoxy *FBE Series*

- Designed for pipeline and rebar coating.
- Excellent adhesion & anti-corrosion properties.
- Exceptional chemical & abrasion resistance.

WE TARGETING
TO BE RECOGNIZED AS AN **ADVANCED**
AND **RELIABLE**
MANUFACTURER OF
POWDER COATING PRODUCTS
WITH
FOLLOWING STRENGTHS.



- Consistent Quality products.
- Available of full powder coating product range.
- Expertise in architectural and functional coatings.
- High performance low cost solutions.
- Product certifications and warranties.
- Faster deliveries to meet customer's deadlines.
- Customized urgent make to order products.
- Team of experienced professionals.
- Sizeable production capacity.
- Strong technical sales support services.
- We know established international brand.



Genesis Powder Coating (Pvt) Ltd.

📍 226, Sundar Industrial Estate, Lahore, Pakistan
☎ +92 42 35297013-15
☎ +92 300 077 0888
✉ info@genesispowder.com
🌐 www.genesispowder.com

